

Optimization of electrochemically deposited Pt and Pt₃Co for PEMFC cathodes



Ivan Radev^{1*}, Ann-Kathrin Egetenmeyer², Eun-Jin Oh³, Dan Durneata³, Volker Peinecke¹, Harald Natter³, Rolf Hempelmann³, Manfred Baumgärtner², Renate Freudenberger²



¹Zentrum für Brennstoffzellentechnik, ZBT Duisburg
²Forschungsinstitut Edelmetalle + Metallchemie, fom
³Universität des Saarlandes
 (*) i.radev@zbt-duisburg.de

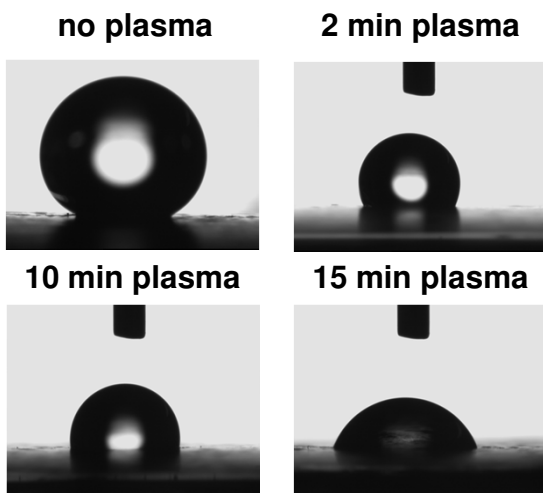


Motivation

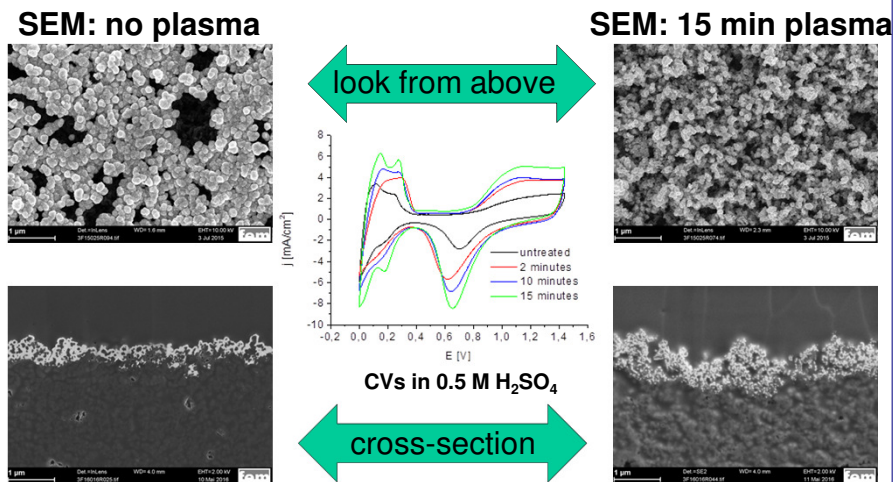
The objective of the project „In-situ electrochemical deposition (ISECD)“ is the development of highly-efficient cathodes for PEMFC at an increased noble metal utilization via optimization and qualification of two electrochemical approaches: galvanic (water electrolyte) and potentiostatic (dry Nafion electrolyte, to suppress HER during Co) electrodeposition.

Both methods rely on electrochemical reduction of catalyst salt precursors. The catalysts are directly deposited on a microporous layer (MPL) of a gas diffusion substrate (GDS) Freudenberg H23C8. The potential advantage of the electrochemical catalyst deposition is the high catalyst utilization towards electrochemical processes as in PEMFC. The teflonized MPL do not allow an optimal electrolyte contact during the electrodeposition. Therefore, an optimized plasma pre-treatment procedure is under development. The electrodeposited cathodes are later on impregnated with an ionomer with an optimized distribution and loading, laminated in MEAs and tested (including durability) in a 25 cm² Baltic Fuel Cell hardware.

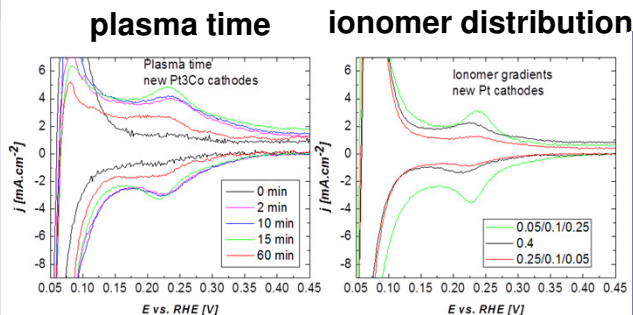
Effect of plasma on the MPL surface wettability



Effect of plasma on the electrodeposited catalyst layer

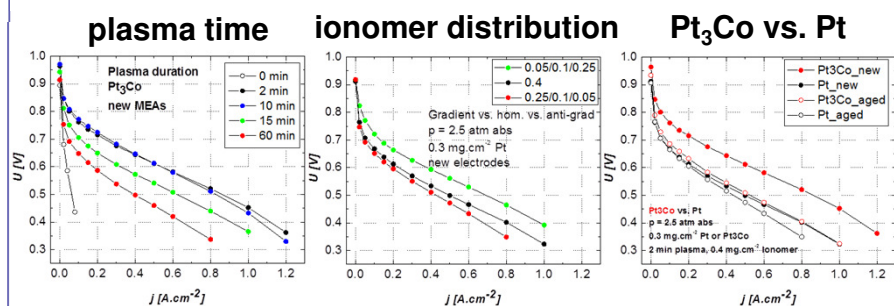


PEMFC CVs: effect of plasma and ionomer distribution



Cyclic voltammetry curves: for ECSA see the Had (lower peaks)

PEMFC polarization curves



PEMFC polarization curves taken at identical conditions